

# Human Peptide Ready HLA-A\*24:02&B2M Monomer Protein



Cat. No. MHC-HM46R

## Description

<b>Source</b>	Recombinant Human Peptide Ready HLA-A*24:02&B2M Monomer Protein is expressed from HEK293 with His tag and Avi tag at the C-Terminus. It contains Gly25-Thr305(HLA-A*24:02) and Ile21-Met119(B2M).
<b>Accession</b>	AAA59600.1(HLA-A*24:02)&P61769(B2M)
<b>Molecular Weight</b>	The protein has a predicted MW of 48.30 kDa. Due to glycosylation, the protein migrates to 50-60 kDa based on Tris-Bis PAGE result.
<b>Endotoxin</b>	Less than 1EU per µg by the LAL method.
<b>Purity</b>	> 95% as determined by Tris-Bis PAGE > 95% as determined by HPLC

## Formulation and Storage

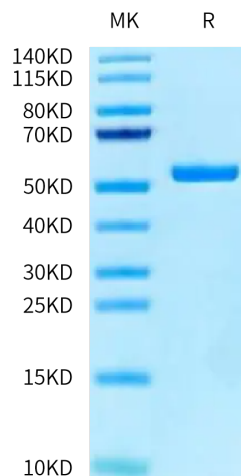
<b>Formulation</b>	Lyophilized from 0.22 µm filtered solution in PBS (pH 7.4). Normally 8% trehalose is added as protectant before lyophilization.
<b>Reconstitution</b>	Centrifuge the tube before opening. Reconstituting to a concentration more than 100 µg/ml is recommended. Dissolve the lyophilized protein in distilled water.
<b>Storage</b>	-20 to -80°C for 12 months as supplied from date of receipt. -80°C for 3-6 months after reconstitution. 2-8°C for 2-7 days after reconstitution. Recommend to aliquot the protein into smaller quantities for optimal storage. Please minimize freeze-thaw cycles.

## Background

Peptide Ready HLA-A\*24:02&B2M Monomer is absent from peptide, namely peptide-receptive MHC. It can be loaded with antigenic peptides matching HLA-A\*24:02. Peptide ready MHC molecules comprising human HLA alleles and B2M, which can be readily tetramerized and loaded with peptides of choice in a high-throughput manner.

## Assay Data

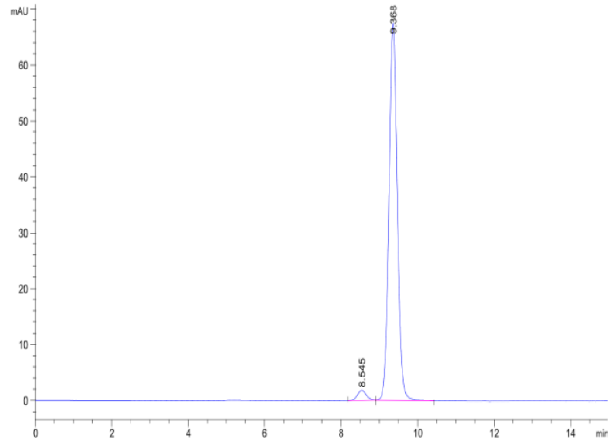
### Tris-Bis PAGE



Human Peptide Ready HLA-A\*24:02&B2M Monomer on Tris-Bis PAGE under reduced condition. The purity is greater than 95%.

### SEC-HPLC

Assay Data



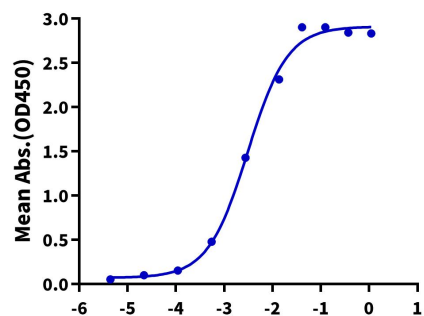
The purity of Human Peptide Ready HLA-A\*24:02&B2M Monomer is greater than 95% as determined by SEC-HPLC.

Assay Data

ELISA Data

**Human Peptide Ready HLA-A\*24:02&B2M Monomer, His Tag ELISA**

0.05µg Human Peptide Ready HLA-A\*24:02&B2M Monomer, His Tag Per Well



Log Anti-HLA class I (W6/32) Antibody, hFc Tag Conc.(µg/ml)

Immobilized Human Peptide Ready HLA-A\*24:02&B2M Monomer, His Tag at 0.5µg/ml (100µl/well) on the plate. Dose response curve for Anti-HLA class I (W6/32) Antibody, hFc Tag with the EC50 of 3.1ng/ml determined by ELISA.